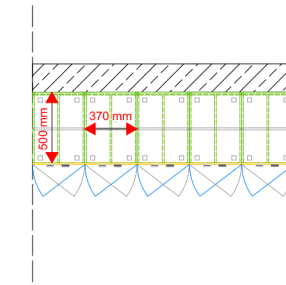
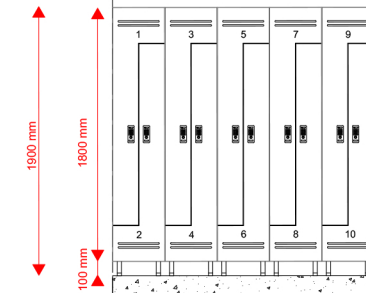


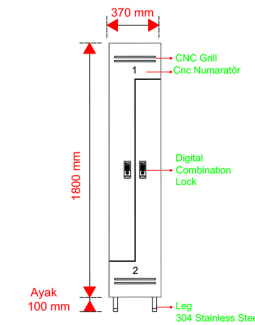
TOP VIEW



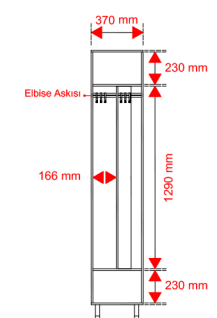
FRONT VIEW



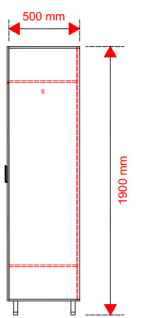
FRONT VIEW



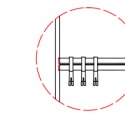
INSIDE VIEW



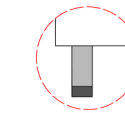
SIDE VIEW



CNC GRILL DETAIL



CLOTHES HANGER DETAIL



30°/30'2 304 STAINLESS STEEL LEG DETAIL

LOCKER DIMENSIONS
W : 370 mm
D : 500 mm
H : 1800 mm
Lock:
Two alternatives can be used: standard, master and digital lock.
Hinge:
Nickel plated bowl hinge and stainless steel leaf hinge are used.
Numarator:
It is optional to process the Cover Panel with the chosen typeface and font using a CNC MACHINE or an aluminum plate numarator.
Leg:
304 Stainless steel, anti-bacterial plastic floor connection. Adjustable height is 100-150 mm and helps to adapt to the slope of the wet areas in general.
Connections:
All fasteners used in accessories and cubicle assembly are 304 quality stainless steel.