



S SANDER
M MODEL NAME
01 PRODUCT CODE
M PRODUCT TYPE
012 PANEL THICKNESS



SM07M012

HANGER

- It is made of anodized aluminum double hook.
- This ergonomic product is 35 mm in width and 55 mm in height.
- Aluminum was used in the manufacturing of this product.
- It is corrosion-free within the guarantee term.
- Water and humidity resistant.
- Plastic material is added at the product's end to serve as a stopper and prevent impacts.



PS0112M

U - Connection Profile

- The edges of the panel are not visible when the cabin system spins to the application of this connection piece.
- The U profile's exterior dimensions will be 22 x 15 mm, with a wall thickness of 1.5 mm.
- It will be used to link U profile-Wall and U profile-Divider Panels.
- Its dimensions are 4.2 x 11 mm. Thick threaded, stainless steel screws are used to fasten it.



SM04M012

LOCK

- They're compatible with both 12 mm and 18 mm HPL panels.
- It has a mechanism for sliding.
- Matte metal body and handle.
- Antibacterial plastic floor connection.
- Sliding is used for locking.



PS0412M

Corner Connection Profile

- The edges of the panel are not visible when the cabin system spins thanks to the application of this connection piece.
- Size: 30 x 30 mm.
- Compact laminate panels will grab the corner profile on all sides.
- This product attached using 304 grade stainless steel screws with a coarse thread measuring 4.2 x 11 mm...



PS0212M

Top Panel Connection Profile

- Matte anodized metal top Profiles will be installed on the cabinet system's top, front, and side edges.
- A curved profile with dimensions of 50 mm x 45 mm and a wall thickness of 1.2 mm will be utilized as the header profile.



SM03M012

HINGE

- This product belongs to the category of closed (panel overlap) style door systems.
- There is graded ABS plastic for closing (panel rebated) door systems that allows the doors to close automatically.
- Metal pieces will be composed of anodized aluminum.
- They're compatible with both 12 mm and 18 mm HPL panels.



SM01M012

LEG

- The size range is 150-200 mm, with a diameter of 27mm.
- They're compatible with both 12 mm and 18 mm HPL panels.
- They're linked to the anti-bacterial plastic floor.
- Body is produced with matte anodized aluminum.
- It has a carrying capacity of 70 kg.
- It has 52 mm diameter leg cover.



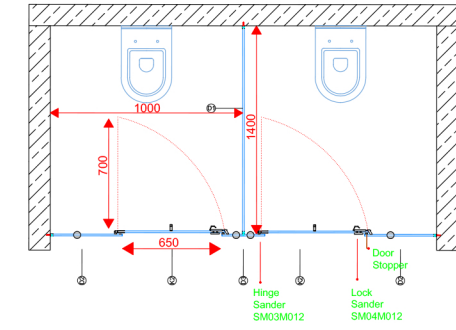
SM08M012

GRIP

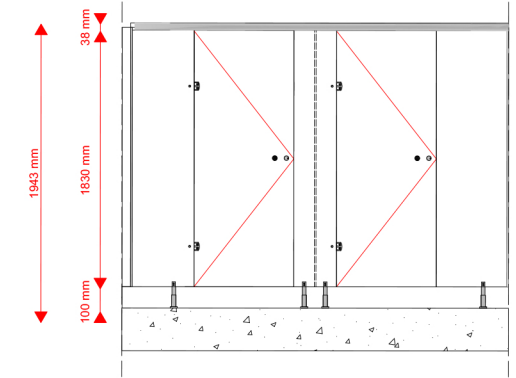
- It is 25 mm in diameter, and 32 mm in length.
- It has an M8x35 grub screw connection.
- It is not affected by water, humidity and corrosion.
- It is warranty is covered by SANDER's guarantee.



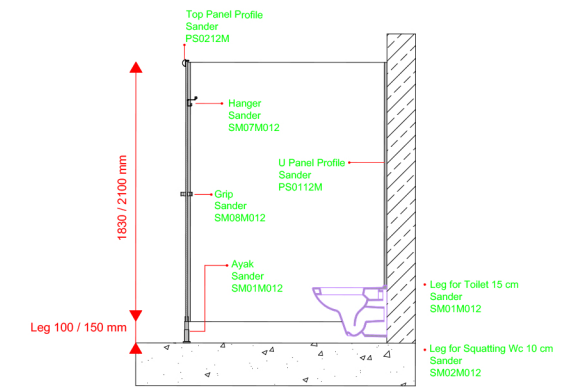
TOP VIEW



FRONT VIEW



SIDE VIEW



HINGE DETAIL



DOOR DETAIL



LOGO DETAIL

CNC machine with logo on lock side will be etched on the back side of each door panel.



LOCK DETAIL

PANELS

The feature is 12 mm Compact laminate panels with double surface decorative, water, scratch, and break resistant, bacteria free, and fire retardant. CGS - CGF EN 438-4 class

LOCK

The door opens with the colored mechanism on the mechanism (SLIDE). It indicates whether or not it is busy from the outside. It's made of MATTE anodized aluminum.

HINGE

Matte Anodized Aluminum for single-face (CLOSING SYSTEM) door systems, with self-closing, degrees adjustable, and security screw.

LEG

Anti-bacterial plastic floor connection, matte anodized metal.

The adjustable height is 100-150 mm, making it suited for moist regions in general.

It aids in adapting to the current slope.

CONNECTIONS AND PROFILES

At junctions, head profiles and "U" profiles MAT aluminum, panel-wall, and panel-panel are utilized. Fasteners used in cabinet assembly are all stainless steel.