



S	R	01	M	012
SANDER	MODEL NAME	PRODUCT CODE	PRODUCT TYPE	PANEL THICKNESS



SR07M012 HANGER

- It is made of anodized aluminum double hook.
- This ergonomic product is 35 mm in width and 55 mm in height.
- Aluminum was used in the manufacturing of this product.
- It is corrosion-free within the guarantee term.
- Water and humidity resistant.
- Plastic material is added at the product's end to serve as a stopper and prevent impacts.

PS0112M U-Connection Profile

- The edges of the panel are not visible when the cabin system spins to the application of this connection piece.
- The U profile's exterior dimensions will be 22 x 15 mm, with a wall thickness of 1.5 mm.
- It will be used to link U profile-Wall and U profile-Divider Panels.
- Its dimensions are 4.2 x 11 mm. Thick threaded, stainless steel screws are used to fasten it.

PS0312M Door Bini Profile

- It is an anodized, aluminum matte profile that serves as a boarding at the door by attaching to fixed panels.
- This item measures 4.2 x 11 mm, coarse thread, fastened with 304 stainless screws, in the 1Y1B style.

PS0412M Corner Connection Profile

- The edges of the panel are not visible when the cabin system spins thanks to the application of this connection piece.
- Size: 30 x 30 mm.
- Compact laminate panels will grab the corner profile on all sides.
- This product attached using 304 grade stainless steel screws with a coarse thread measuring 4.2 x 11 mm.

PS0212M Top Panel Connection Profile

- Matte anodized metal top Profiles will be installed on the cabinet system's top, front, and side edges.
- A curved profile with dimensions of 50 mm x 45 mm and a wall thickness of 1.2 mm will be utilized as the header profile.

SR03M012 HINGE

- The flat (single face) style door systems category includes this product.
- There is graded ABS plastic for closing (panel rebated) door systems that allows the doors to close automatically.
- The panel connectors will be secured with four screws.
- The hinge covers won't have any visible wings.

SR01M012 LEG

- The size range is 150-200 mm, with a diameter of 27mm.
- They're compatible with both 12 mm and 18 mm HPL panels.
- They're linked to the anti-bacterial plastic floor.
- Body is produced with matte anodized aluminum.
- It has a carrying capacity of 70 kg.
- It has 52 mm diameter leg cover.

SR08M012 GRIP

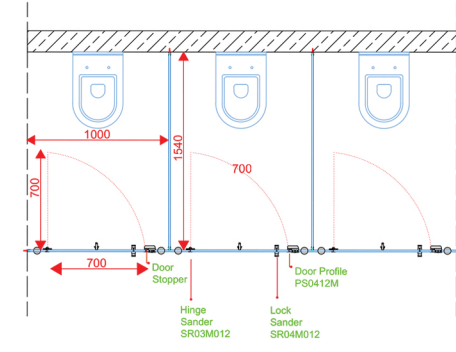
- It is 25 mm in diameter, and 32 mm in length.
- It has an M8x35 grub screw connection.
- It is not affected by water, humidity and corrosion.

SR04M012 LOCK

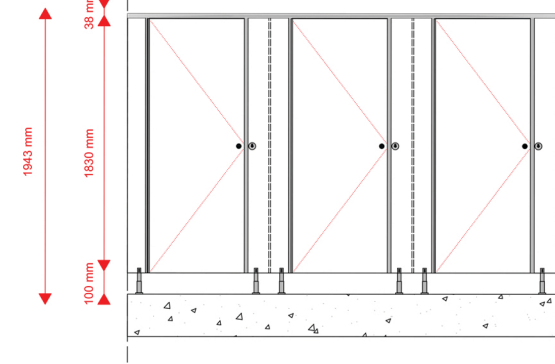
- For doors that open outward, the lock is fastened to the door; for doors that open inward, it is fastened to the fixed panel.
- They're compatible with both 12 mm and 18 mm HPL panels.
- It has a latch and dial mechanism.
- It has a matte anodized aluminum profile latch, twisted body, and arm.



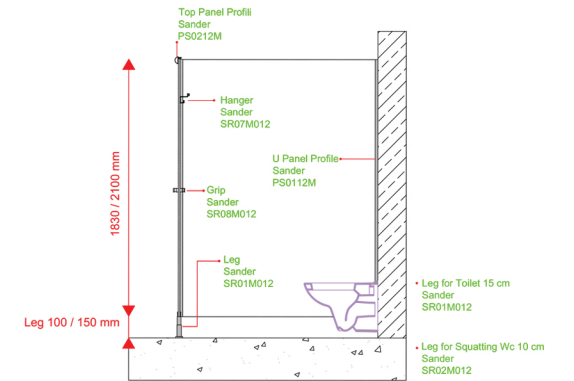
TOP VIEW



FRONT VIEW



SIDE VIEW



HINGE DETAIL



DOOR DETAIL



LOGO DETAIL
CNC machines with logo on lock side will be etched on the back side of each door panel.



LOCK DETAIL

PANELS
The feature is 12 mm Compact laminate panels with double surface decorative, water, scratch, and break resistant, bacteria free, and fire retardant. CGS - CGF EN 438-4 class

LOCK
The door shows if it is busy from the outside by turning the colored mechanism on the latch (TURNED). Anodized Aluminum Matte

HINGE
Matte Anodized Aluminum for single face (BINI PROFILE SYSTEM) door systems, with self-closing, degrees adjustable, and security screw.

LEG
Anti-bacterial plastic floor connection, matte anodized metal. The adjustable height is 100-150 mm, making it suited for moist regions in general. It aids in adapting to the current slope.

CONNECTIONS AND PROFILES
At junctions, head profiles and "U" profiles MAT aluminum, panel-wall, and panel-panel are utilized. Fasteners used in cabinet assembly are all stainless steel.