



S S 01 X 012
SANDER MODEL NAME PRODUCT CODE PRODUCT TYPE PANEL THICKNESS



SS17X012
TOP PANEL CONNECTION BRACKET
• Top hanger connector.
• It serves to keep the panels from wobbling when connected.
• The product form is pipe and has a diameter of 27 mm.
• Made of stainless steel of the 304 grade.
• When using the product, it is connected to the wall connection equipment and affixed to the wall.
• Top connector with a 4.2x11 mm coarse thread made of 304.
• Using high-quality stainless steel screws, it is secured.



SS03X012
HINGE-SPRING
• The flat (Tongue-Groove) style door systems category includes this product.
• Metal pieces'll be composed of stainless steel.
• The hinge covers won't have any visible wings.
• They're compatible with both 12 mm and 18 mm HPL panels.
• 90 mm in height and 70 mm in width.



SS01X012
LEG
• The size range is 100-150 mm with a diameter of 27mm.
• It has 52 mm diameter leg cover.
• The accessory's adjustable height ranges from 100mm to 150mm.
• The material will be protected by a 12.5 mm duct in a compact laminate panel.
• The leg foundation will be secured to the ground using PA6 shoes that are attached with stainless screws at at least three distinct spots.



SS08X012
HANGER
• It's made of 304 quality stainless steel.
• It is corrosion-free within the guarantee term.
• Water and humidity resistant.
• Plastic material is added at the product's end to serve as a stopper and prevent impacts.
• It is capable of transporting up to 10 kilograms.



SS11X012
WALL CONNECTION
• This product is used to install the original top panel connecting pipe to the wall.
• Top panel fixed holder made of 304 quality stainless steel.
• They're compatible with both 12 mm and 18 mm HPL panels.



SS13X012
90° ADAPTER
• It has a 'L' form and a 32 mm diameter.
• It serves a purpose in connecting the wall and partition panels.
• This item is constructed of 304 stainless steel.
• It is linked to the top panel pipe in corner turn cabinets with two M4*8 grub screws.



PS0112X
U CONNECTION PROFILE
• The edges of the panel are not visible when the cabin system spins thanks to the application of this connection piece.
• The U profile's exterior dimensions will be 22 x 15 mm, with a wall thickness of 1.5 mm.
• It will be used to link U profile-Wall and U profile-Divider Panels.
• Its dimensions are 4.2 x 11 mm. Thick threaded, stainless steel screws are used to fasten it.



SS05X012
LOCK
• They're compatible with both 12 mm and 18 mm HPL panels.
• It has a latch and dial mechanism.
• It has a 304 quality stainless steel profile latch, twisted body, and arm.
• It uses the latch turning mechanism to lock.
• It has a latch and dial, and with the colored mechanism (red-green) on it, it displays from the outside whether the door is busy or not -it is interfered from the outside in case of an emergency.

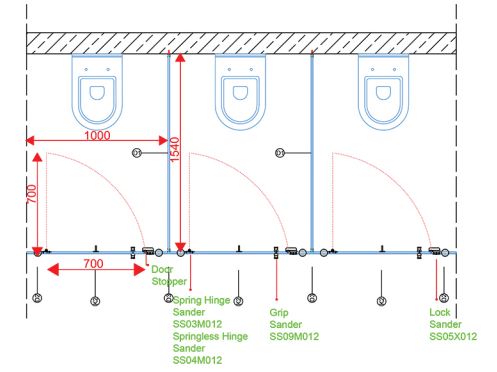


SS04X012
HINGE-SPRINGLESS
The flat (Tongue-Groove) style door systems category includes this product.
• Metal pieces'll be composed of stainless steel.
• The hinge covers won't have any visible wings.
• They're compatible with both 12 mm and 18 mm HPL panels.
• 90 mm in height and 70 mm in width.

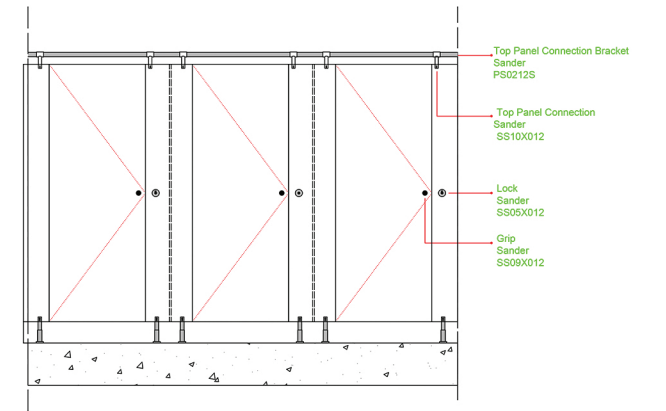


PS0412X
CORNER CONNECTION PROFILE
• The edges of the panel are not visible when the cabin system spins thanks to the application of this connection piece.
• Size: 30 x 30 mm.
• Compact laminate panels will grab the corner profile on all sides.
• This product attached using 304 grade stainless steel screws with a coarse thread measuring 4.2 x 11 mm.

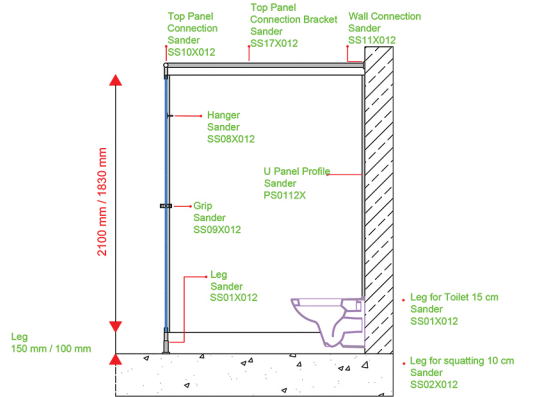
TOP VIEW



FRONT VIEW



SIDE VIEW



PANELS
The feature is 12 mm Compact laminate panels with double surface decorative, water, scratch, and break resistant, bacteria free, and fire retardant. CGS - CGF EN 438-4 class.

LOCK
The door shows if it is busy from the outside by turning the colored mechanism on the latch (TURNED). 304 Quality Stainless Steel.

HINGE
Abs Plastic degree-adjustable and self-closing security screw for single-face (TONGUE-GROOVE SYSTEM) door systems. 304 Stainless Steel

LEG
Anti-bacterial plastic floor connection, 304 Stainless Steel. The adjustable height is 100-150 mm, making it suited for moist regions in general.
It aids in adapting to the current slope.

CONNECTIONS AND PROFILES
At junctions, head profiles and "U" profiles 304 Stainless steel, panel-wall, and panel-panel are utilized. Fasteners used in cabinet assembly are all stainless steel.