



**S S 01 X 012**  
SANDER MODEL NAME PRODUCT CODE PRODUCT TYPE PANEL THICKNESS



**SS07X012 HANGER**  
• It's made of 304 quality stainless steel.  
• It is corrosion-free within the guarantee term.  
• Water and humidity resistant.  
• Plastic material is added at the product's end to serve as a stopper and prevent impacts.  
• It is capable of transporting up to 10 kilograms.



**PS0112X U CONNECTION PROFILE**  
• The edges of the panel are not visible when the cabin system spins thanks to the application of this connection piece.  
• The U profile's exterior dimensions will be 22 x 15 mm, with a wall thickness of 1.5 mm.  
• It will be used to link U profile-Wall and U profile-Divider Panels.  
• Its dimensions are 4.2 x 11 mm. Thick threaded, stainless steel screws are used to fasten it.



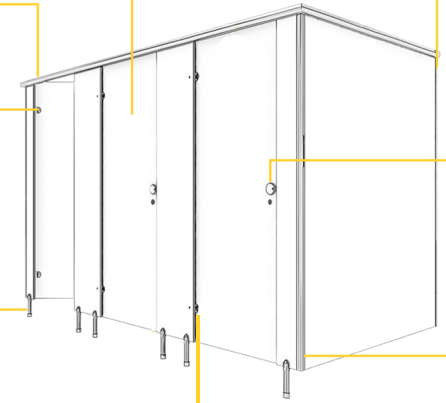
**PS0512X TOP PANEL PROFILE**  
• Profiles will be installed on the cabinet system's top, front, and side edges.  
• A square profile with dimensions of 50 mm x 45 and a wall thickness of 1.2 mm will be utilized as the header profile.



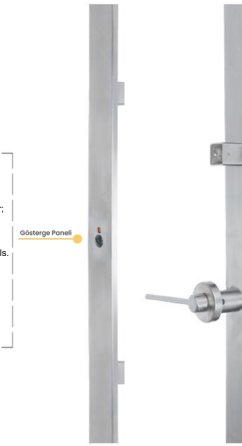
**SS03X012 HINGE-SPRING**  
• The flat (Tongue-Groove) style door systems category includes this product.  
• Metal pieces'll be composed of stainless steel.  
• The hinge covers won't have any visible wings.  
• They're compatible with both 12 mm and 18 mm HPL panels.  
• 90 mm in height and 70 mm in width.



**SS01X012 LEG**  
• The size range is 100-150 mm with a diameter of 27mm.  
• It has 52 mm diameter leg cover.  
• This accessory's adjustable height ranges from 100mm to 150mm.  
• The material will be protected by a 12.5 mm duct in a compact laminate panel.  
• The leg foundation will be secured to the ground using P40 shoes that are attached with stainless screws at at least three distinct spots



**SS16X012 LOCK - GRIP**  
• For doors that open outward, the lock is fastened to the door; for doors that open inward, it is fastened to the fixed panel.  
• They are made of 304 quality stainless steel.  
• It has a diameter of 40 mm and a length of 140 cm.  
• They're compatible with both 12 mm and 18 mm HPL panels.  
• It has a latch and dial mechanism.  
• The latch turning method is used to lock the interior of the cabinet.  
• It has a latch and dial, and with the colored mechanism (red-green) on it, it displays from the outside whether the door is busy or not.  
• It is interfered from the outside in case of an emergency



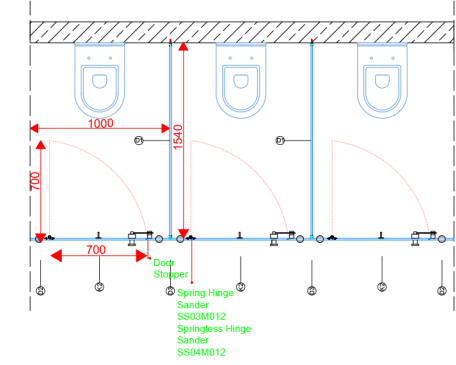
**PS0412X CORNER CONNECTION PROFILE**  
• The edges of the panel are not visible when the cabin system spins thanks to the application of this connection piece.  
• Size: 30 x 30 mm.  
• Compact laminate panels will grab the corner profile on all sides.  
• This product attached using 304 grade stainless steel screws with a coarse thread measuring 4.2 x 11 mm.



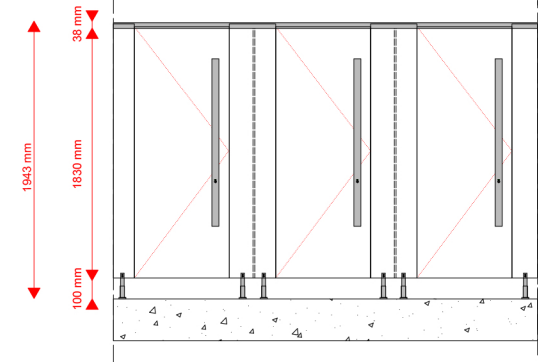
**SS04X012 HINGE-SPRINGLESS**  
The flat (Tongue-Groove) style door systems category includes this product.  
• Metal pieces'll be composed of stainless steel.  
• The hinge covers won't have any visible wings.  
• They're compatible with both 12 mm and 18 mm HPL panels.  
• 90 mm in height and 70 mm in width.



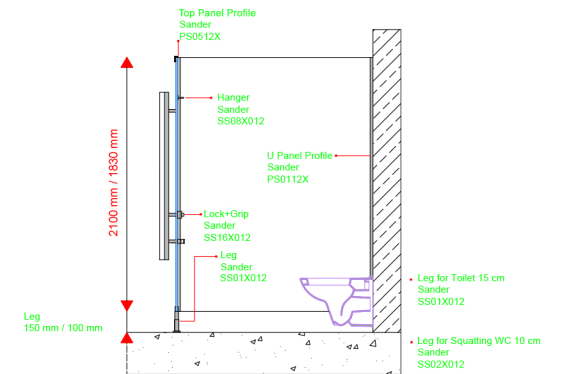
TOP VIEW



FRONT VIEW



SIDE VIEW



HINGE DETAIL

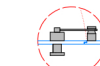


DOOR DETAIL



LOGO DETAIL

CNC machine with logo on lock axle will be etched on the back side of each door panel.



LOCK DETAIL

**PANELS**  
The feature is 12 mm Compact laminate panels with double surface decorative, water, scratch, and break resistant, bacteria free, and fire retardant. CGS - CGF EN 438-4 class  
**LOCK**  
The door shows if it is busy from the outside by turning the colored mechanism on the latch (TURNED), 304 Quality Stainless Steel.  
**HINGE**  
Abs Plastic degree-adjustable and self-closing security screw for single-face (TONGUE-GROOVE SYSTEM) door systems. 304 Stainless Steel  
**LEG**  
Anti-bacterial plastic floor connection, 304 Stainless Steel.  
The adjustable height is 100-150 mm, making it suited for moist regions in general. It aids in adapting to the current slope.  
**CONNECTIONS AND PROFILES**  
At junctions, head profiles and "U" profiles 304 Stainless steel, panel-wall, and panel-panel are utilized. Fasteners used in cabinet assembly are all stainless steel.